

**ATTENZIONE: OLIO SINTETICO
ATTENTION: SYNTHETIC OIL
ATTENTION: HUILE DE SYNTHÈSE
ACHTUNG: SYNTHETIKOEL**



**Carico statico
Static load
Charge statique
Statische Belastung**

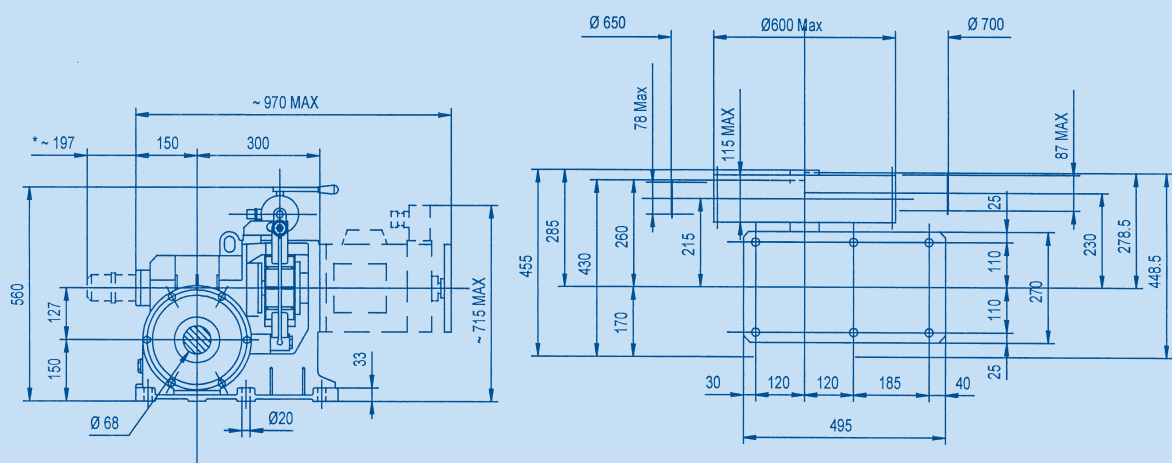
kg. 2000 max

**Capacità olio
Oil capacity
Capacité huile
Oelmenge**

L. 2,8

**Peso argano
Gear weight
Poids treuil
Getriebegewicht**

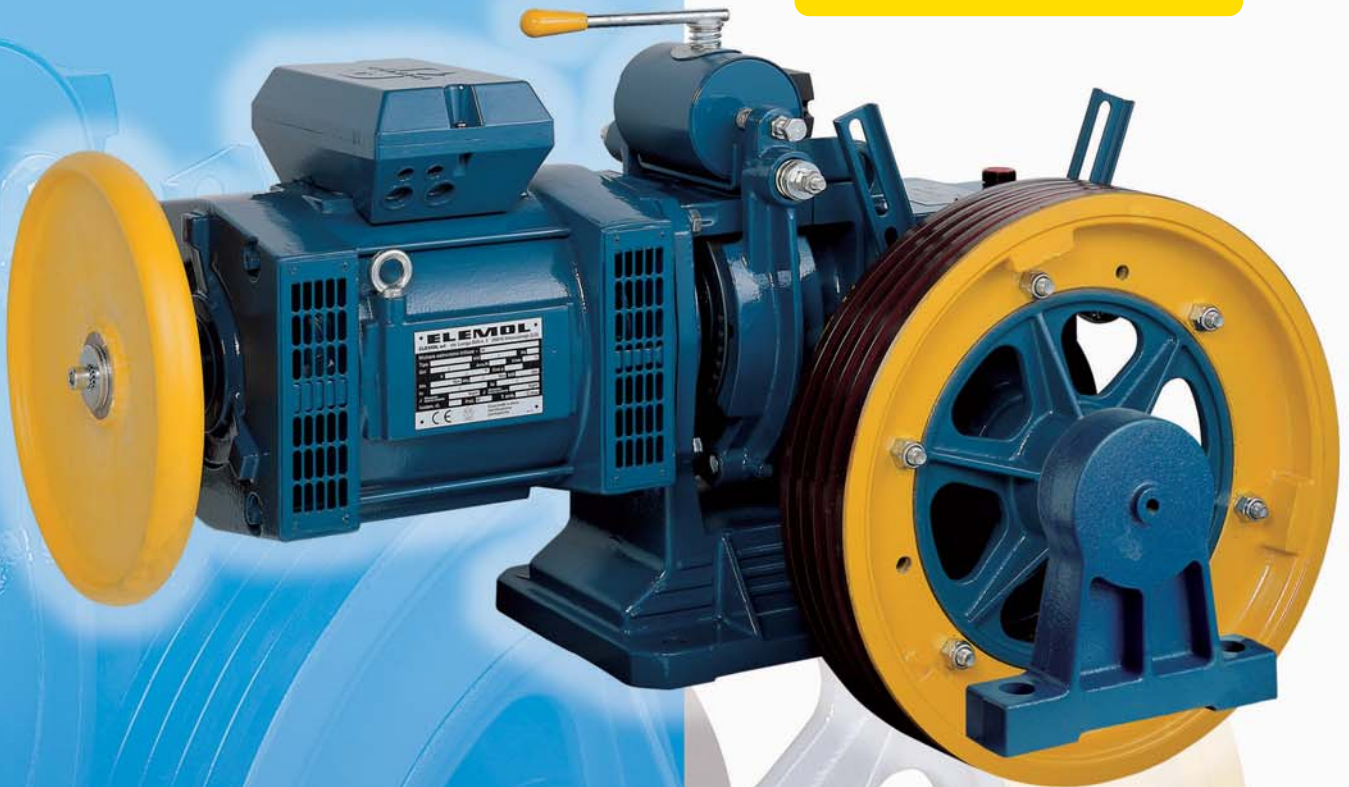
kg. 115



* encoder o dinamo tachimetrica – tacho or encoder – dinamo or encodeur – Tacho oder Impulsgeber



**ATTENZIONE: OLIO SINTETICO
ATTENTION: SYNTHETIC OIL
ATTENTION: HUILE DE SYNTHESE
ACHTUNG: SYNTHETIKOEL**



**Carico statico
Static load
Charge statique
Statische Belastung**

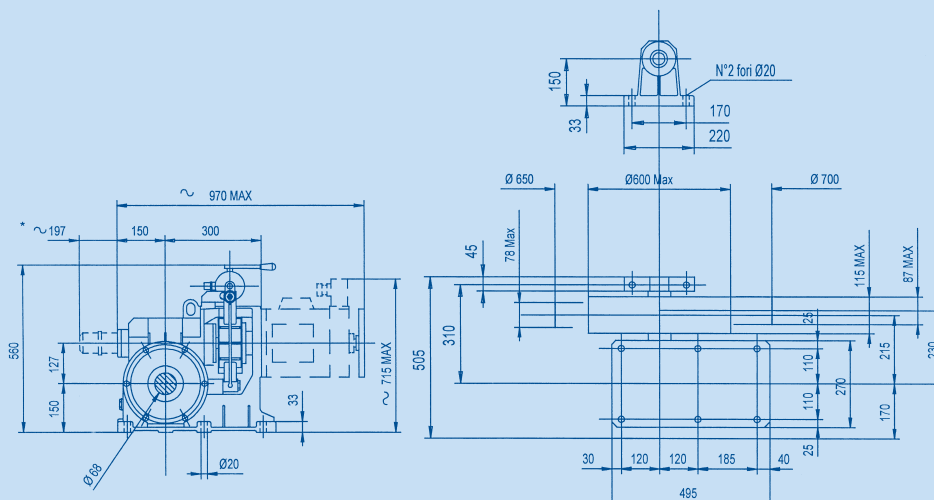
kg. 3200 max

**Capacità olio
Oil capacity
Capacité huile
Oelmenge**

L. 2,8

**Peso argano
Gear weight
Poids treuil
Getriebegewicht**

kg. 120



* encoder o dinamo tachimetrica – tacho or encoder – dinamo or encodeur – Tacho oder Impulsgeber

