

# MF48

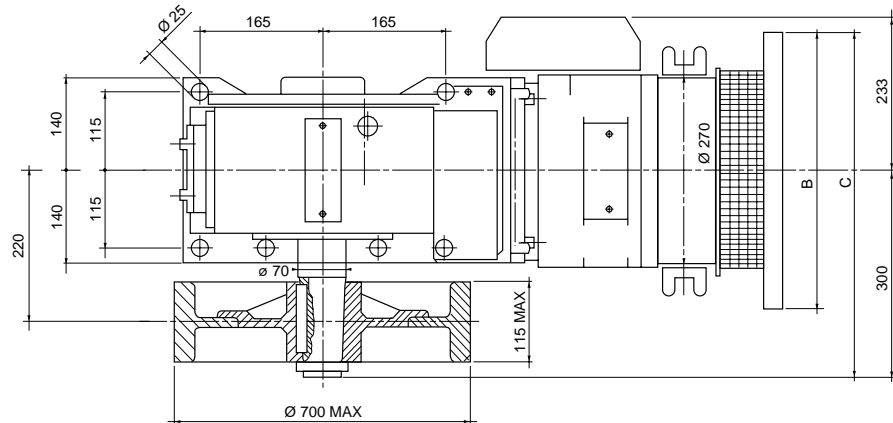
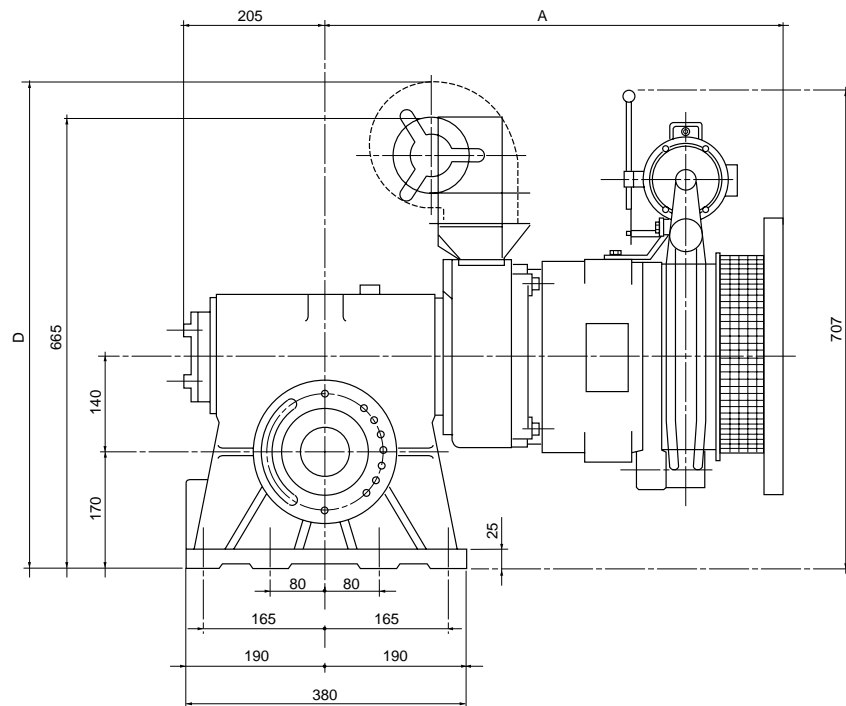


MF48

| DATI                        | DATA                         | ANGABE                            | DATOS                             | DONNÉES                       |                        |
|-----------------------------|------------------------------|-----------------------------------|-----------------------------------|-------------------------------|------------------------|
| <b>Carico statico max</b>   | <b>Max. static load</b>      | <b>Statische Höchstlast</b>       | <b>Max carga estatica</b>         | <b>Charge statique maxi</b>   | <b>kg 3100</b>         |
| Rapporti                    | Ratios                       | Übersetzungen                     | Reducciones                       | Rapports                      | 1/60 1/47<br>2/71 3/56 |
| Gamma potenze a 4/16 poli   | Powers range at 4/16 poles   | Leistungsbereich für 4/16 Polen   | Escala potencias con 4/16 polos   | Gamme puissances 4/16 pôles   | 3.5 → 7.3 kW SYNC      |
| Gamma potenze a 6/24 poli   | Powers range at 6/24 poles   | Leistungsbereich für 6/24 Polen   | Escala potencias con 6/24 polos   | Gamme puissances 6/24 pôles   | 2.9 → 4.4 kW SYNC      |
| Gamma potenze VVVF a 4 poli | Powers range VVVF at 4 poles | Leistungsbereich VVVF für 4 Polen | Escala potencias VVVF con 4 polos | Gamme puissances VVVF 4 pôles | 3.3 → 11.4 kW SYNC     |
| Momento d'inerzia J         | Moment of inertia J          | Tragheitsmoment J                 | Momento de inercia J              | Moment d'inertie J            | Kgm <sup>2</sup> 0.011 |
| Capacità olio               | Oil capacity                 | Ölmenge                           | Capacidad aceite                  | Capacité huile                | 3.8 ℓ                  |

|   | TABELLA DEI PESI<br>Senza volano e puleggia | WEIGHT TABLE<br>Without fly-wheel and sheave | GEWICHTSTABELLE<br>Ohne Schwungscheibe und Tr-Kranz | TABLA DE PESOS<br>Sin volante y polea | TABELLE DES POIDS<br>Sans volant et poulie |
|---|---|--|---|---------------------------------------|--|
| <b>Potenza motore</b><br><b>Motor power</b>       | <b>4/16</b>                                 | kW 3.5 → 4.0 <b>kg 245</b>                   | kW 4.9 <b>kg 250</b>                                | kW 5.5 <b>kg 256</b>                  | kW 6.0 → 7.3 <b>kg 268</b>                 |
| <b>Leistungsbereich</b><br><b>Potencias motor</b> | <b>6/24</b>                                 | kW 2.9 → 3.3 <b>kg 259</b>                   | kW 3.7 → 4.0 <b>kg 271</b>                          | kW 4.4 <b>kg 276</b>                  |  |
| <b>Puissance moteur</b>                           | <b>VVVF</b>                                 | kW 3.3 → 5.9 <b>kg 245</b>                   | kW 6.6 → 7.3 <b>kg 250</b>                          | kW 7.7 → 11 <b>kg 256</b>             | kW 11.4 <b>kg 268</b>                      |

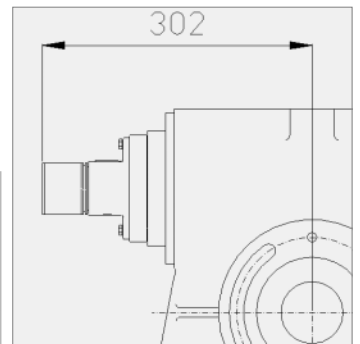
# MF48



|                      |                    |         |
|----------------------|--------------------|---------|
| <b>4/16<br/>POLI</b> | kW <sub>SYNC</sub> | 3.5/7.3 |
|                      | A                  | 675     |
|                      | B                  | 460     |
|                      | C                  | 530     |

|                      |                    |         |
|----------------------|--------------------|---------|
| <b>6/24<br/>POLI</b> | kW <sub>SYNC</sub> | 2.9/4.4 |
|                      | A                  | 675     |
|                      | B                  | 460     |
|                      | C                  | 530     |

|             |                    |          |
|-------------|--------------------|----------|
| <b>VVVF</b> | kW <sub>SYNC</sub> | 3.3/11.4 |
|             | A                  | 655      |
|             | B                  | 350      |
|             | C                  | 475      |



Attacco con encoder standard  
 Coupling for standard encoder  
 Anbau für standard Impulsgeber  
 Embrague standard encoder  
 Accouplement standard encoder



# MF48

# VVVF

1500 rpm  
3100 kg

|                                   |                    |                               |                       |                                   |
|-----------------------------------|--------------------|-------------------------------|-----------------------|-----------------------------------|
| Velocità<br>Giri/min <sup>1</sup> | Speed<br>R.p.m.    | Geschw.<br>U/min <sup>1</sup> | Velocidad<br>R.p.m.   | Vitesse<br>Tours/min <sup>1</sup> |
| Carico<br>statico max             | Max<br>static load | Max statische<br>Achslast     | Carga<br>estatica max | Charge<br>statique max            |

Differenza di tiro in kg con rendimento del vano = 0.8  
 Out of balance load in kg with shaft efficiency = 0.8  
 Zugkraefte in kg mit Schachtwirkungsgrad = 0.8  
 Carga descompensada en kg con rendimiento del hueco = 0.8  
 Force de traction en kg avec rendement de la gaine = 0.8

|  |  |  |
|--|--|--|
| VELOCITÀ<br>SPEED<br>GESCHW.<br>VELOCIDAD<br>VITESSE | RAPPORTO<br>RATIO<br>ÜBERSETZ.<br>REDUCCIONES<br>RAPPORT | PULEGGIA<br>SHEAVE<br>TREIBSCH.<br>POLEA<br>POULIE |
|--|--|--|

kw  
SYNC

| 3.3 | 4.0 | 4.8 | 5.9 | 7.3 | 9.2 | 11.4 | (m / sec) | ø mm |     |
|-----|-----|-----|-----|-----|-----|------|-----------|------|-----|
| 390 | 477 | 564 | 677 |     |     |      | 0.52      | 1/60 | 400 |
| 350 | 428 | 506 | 607 |     |     |      | 0.58      | 1/60 | 450 |
| 327 | 400 | 473 | 568 |     |     |      | 0.62      | 1/60 | 480 |
| 322 | 394 | 466 | 574 | 645 |     |      | 0.66      | 1/47 | 400 |
| 298 | 365 | 431 | 517 |     |     |      | 0.68      | 1/60 | 520 |
| 278 | 340 | 402 | 482 |     |     |      | 0.73      | 1/60 | 560 |
| 284 | 347 | 410 | 505 | 568 |     |      | 0.75      | 1/47 | 450 |
| 260 | 318 | 376 | 451 |     |     |      | 0.78      | 1/60 | 600 |
| 266 | 325 | 384 | 473 | 532 |     |      | 0.80      | 1/47 | 480 |
| 239 | 292 | 345 | 414 |     |     |      | 0.85      | 1/60 | 650 |
| 247 | 303 | 358 | 440 | 495 |     |      | 0.86      | 1/47 | 520 |
| 256 | 313 | 370 | 456 | 570 |     |      | 0.88      | 2/71 | 400 |
| 223 | 273 | 322 | 387 |     |     |      | 0.91      | 1/60 | 700 |
| 229 | 280 | 331 | 407 | 458 |     |      | 0.93      | 1/47 | 560 |
| 228 | 278 | 329 | 405 | 507 |     |      | 1.00      | 2/71 | 450 |
| 213 | 260 | 308 | 379 | 426 |     |      | 1.00      | 1/47 | 600 |
| 213 | 260 | 307 | 378 | 473 |     |      | 1.06      | 2/71 | 480 |
| 197 | 241 | 285 | 351 | 394 |     |      | 1.08      | 1/47 | 650 |
| 196 | 240 | 283 | 349 | 436 |     |      | 1.15      | 2/71 | 520 |
| 183 | 224 | 265 | 326 | 367 |     |      | 1.16      | 1/47 | 700 |
| 183 | 224 | 265 | 326 | 408 |     |      | 1.23      | 2/71 | 560 |
| 171 | 209 | 247 | 304 | 380 |     |      | 1.32      | 2/71 | 600 |
| 158 | 193 | 228 | 280 | 351 |     |      | 1.43      | 2/71 | 650 |
| 146 | 179 | 212 | 260 | 326 |     |      | 1.55      | 2/71 | 700 |
| 143 | 176 | 208 | 256 | 320 | 400 | 497  | 1.68      | 3/56 | 400 |
| 127 | 156 | 185 | 227 | 285 | 356 | 442  | 1.89      | 3/56 | 450 |
| 120 | 147 | 174 | 214 | 268 | 335 | 415  | 2.01      | 3/56 | 480 |
| 111 | 135 | 160 | 197 | 247 | 309 | 383  | 2.18      | 3/56 | 520 |
| 103 | 126 | 148 | 183 | 229 | 286 | 355  | 2.35      | 3/56 | 560 |
| 96  | 117 | 138 | 171 | 213 | 267 | 331  | 2.52      | 3/56 | 600 |
| 88  | 108 | 128 | 157 | 197 | 246 | 306  | 2.73      | 3/56 | 650 |
| 82  | 100 | 119 | 146 | 183 | 229 | 284  | 2.94      | 3/56 | 700 |